



CORE FACILITIES STAFF

www.igb.illinois.edu/corefacilities

Pictured from left to right:

Miranda O'Dell
Research Specialist
modell@illinois.edu
Lab 109

Austin Cyphersmith, PhD
Assistant Director of
Research Instrumentation
ajcypher@illinois.edu
217.244.9654

Kingsley Boateng, PhD
Assistant Director of
Bioscience Research and Microscopy
kboateng@illinois.edu
217.300.1642

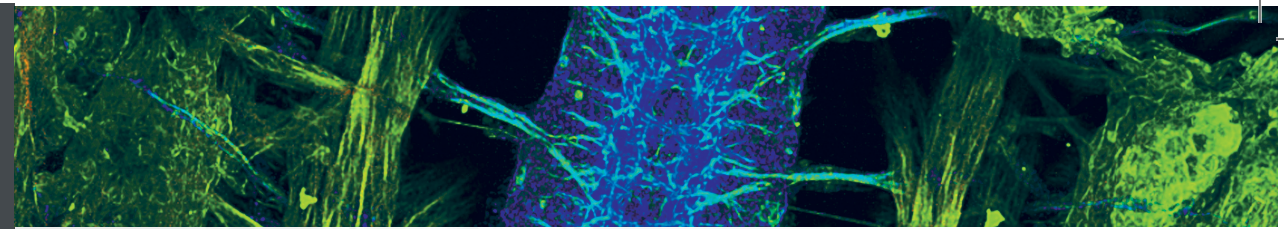
Hannah McClellan
Administrative Support
hlm@illinois.edu
217.300.8346

Glenn Fried, PhD
Director of Core Facilities
gfried@illinois.edu
217.333.4328

 **ILLINOIS**

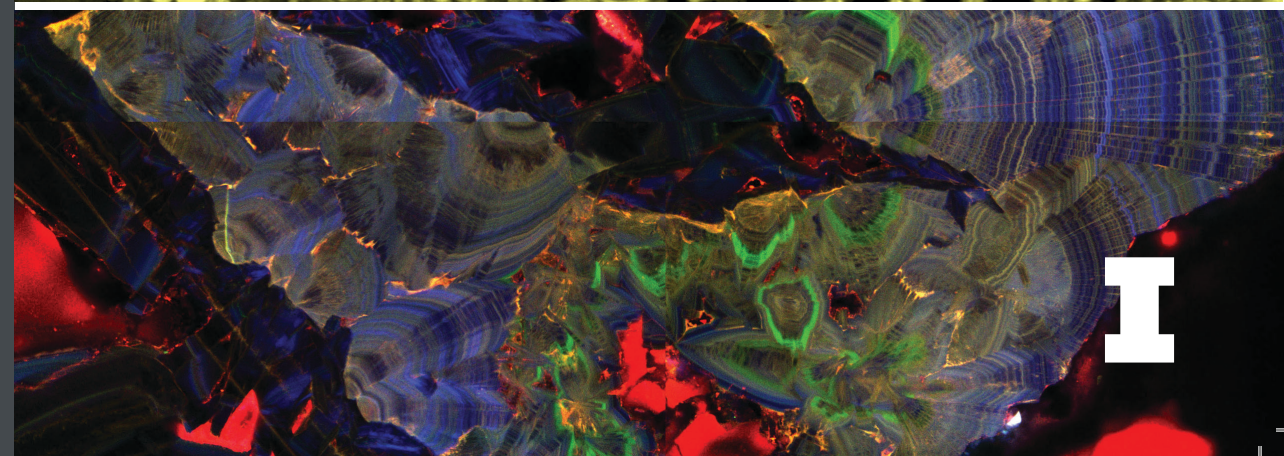
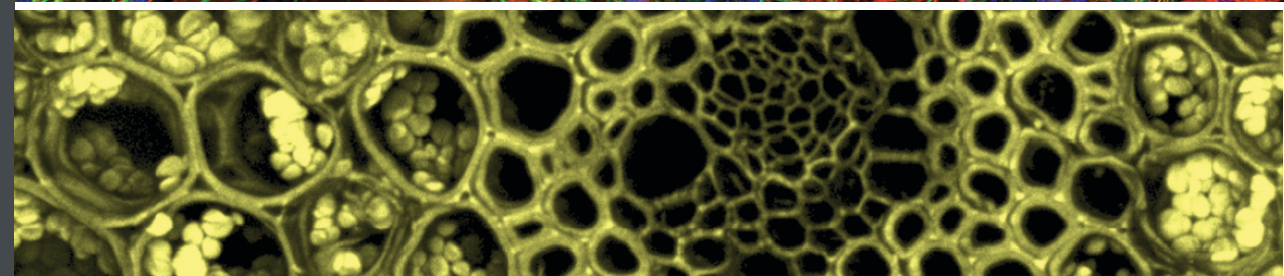
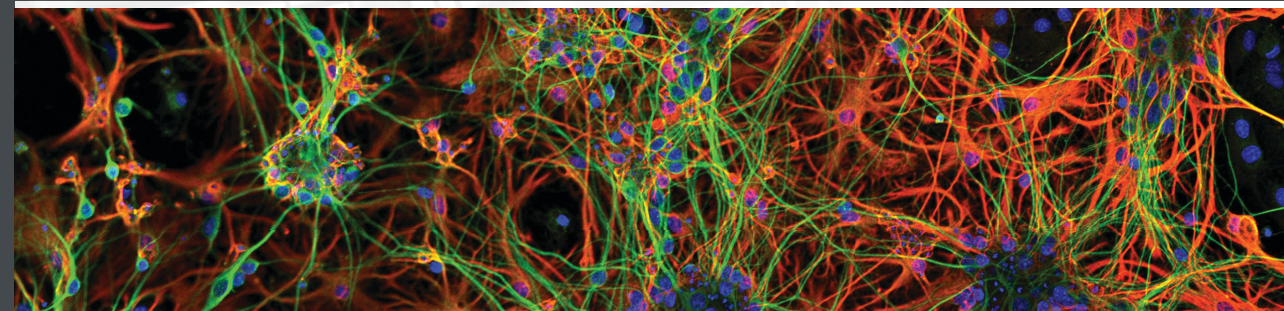
1206 West Gregory Drive
Urbana, Illinois 61801
www.igb.illinois.edu

23.023



CORE FACILITIES

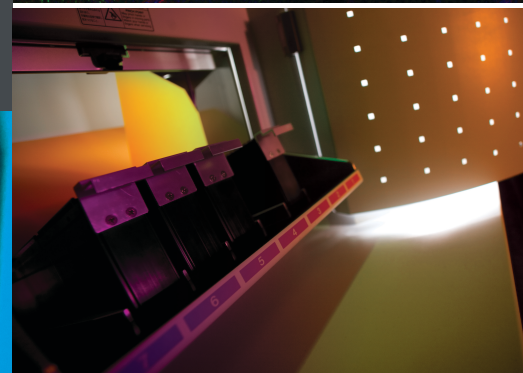
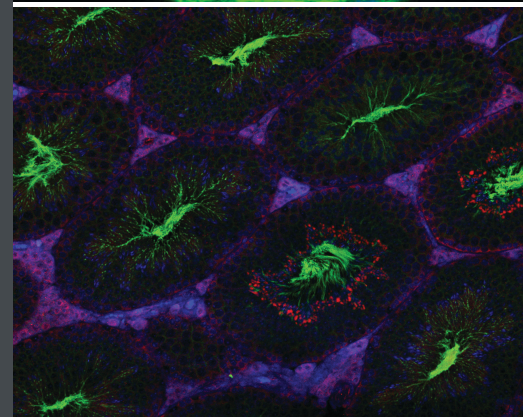
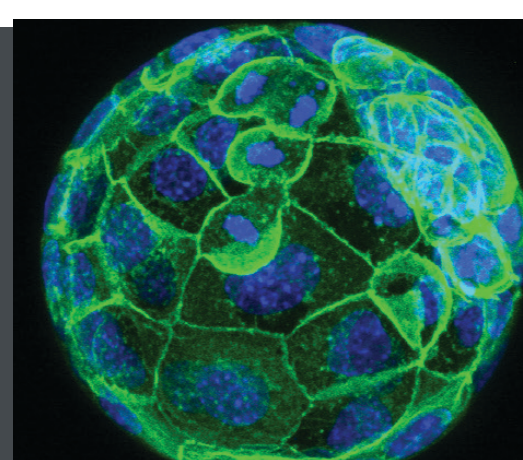
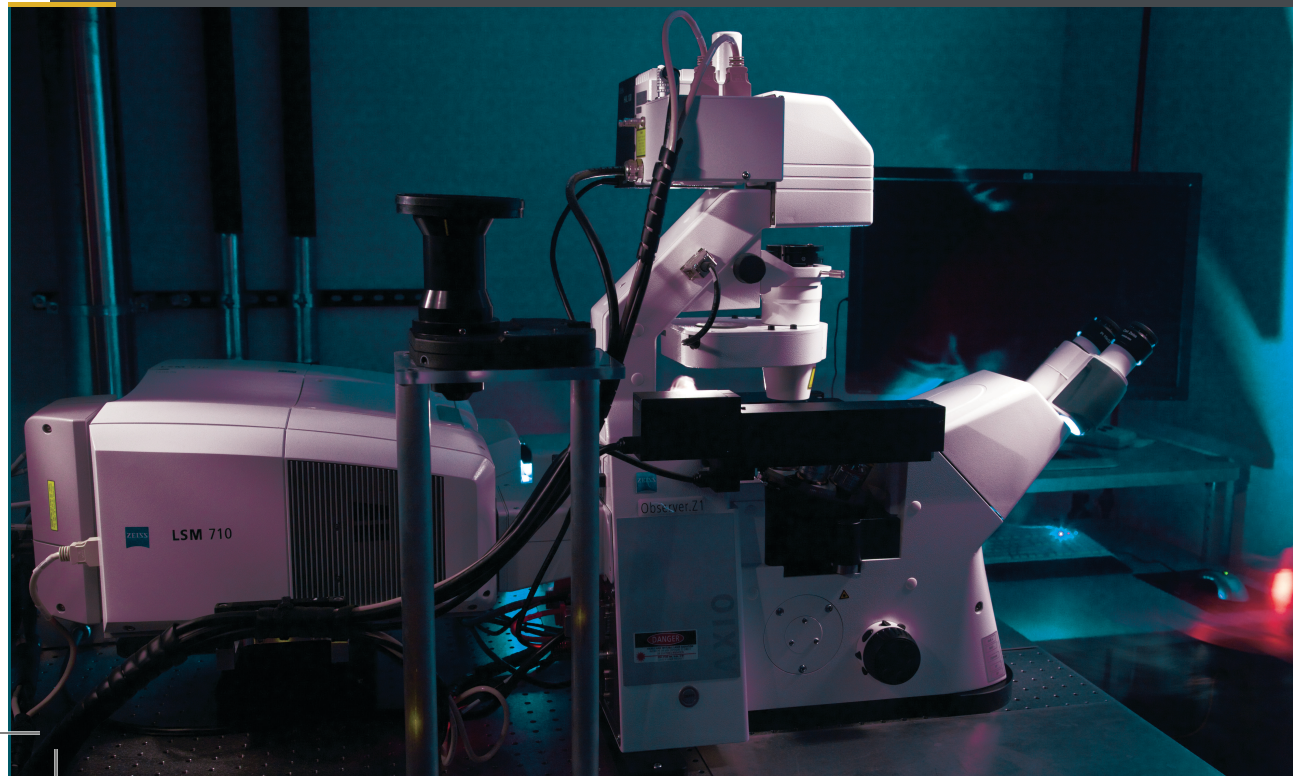
CARL R. WOESE INSTITUTE FOR GENOMIC BIOLOGY



Core Facilities at the IGB is your resource for Light Microscopy, Image Analysis, and Analytical Instrumentation. Our facility provides both step-by-step instruction and in-depth training, allowing researchers to acquire new techniques quickly. With 24/7 access for both IGB researchers and the campus community, IGB Core Facilities can be viewed as an extension of your lab. Our facility is meant to encourage innovation—try new techniques and approaches to achieve your research goals without a significant investment in instrumentation or time. The Core Facilities is a ZEISS Labs@location partner, enabling us to provide both beta instrumentation and advance training to the campus.

WE OFFER:

- ❖ High-end equipment
- ❖ User training
- ❖ Ongoing support, including experiment design and data interpretation
- ❖ Twenty-four hour access



More info at: www.igb.illinois.edu/corefacilities

OPTICAL MICROSCOPY

- Miniflux:** Abberior Miniflux
- Super Resolution Confocal:** Zeiss LSM 900 with Airyscan
- Super Resolution Confocal:** Zeiss LSM 880 with Airyscan
- Multiphoton Confocal:** Zeiss LSM 710
- Confocal:** Zeiss LSM 700
- Structured Illumination Microscope:** Zeiss Elyra S1
- Light Sheet Microscope:** Zeiss Lightsheet Z1
- Light Sheet Microscope:** Ultramicroscope
- Slide Scanner:** Hamamatsu Nanozoomer
- Slide Scanner:** Zeiss Axio Scan Z1 with fluorescence
- Dissecting Microscope:** Zeiss AxioZoom V16

ELECTRON MICROSCOPY

- Serial Block Face SEM:** Zeiss Sigma VP 3View

ATOMIC FORCE MICROSCOPE

- AFM:** Asylum Cypher

SAMPLE PROCESSING

- Cryostat:** Leica CM3050
- Embedding Station:** Leica EG1150 C and EG1150 H
- Microtome:** Leica RM2255
- Clearing:** X-CLARITY

ANALYTICAL

- Gel Imager:** LAS 4000

SOFTWARE

- 3D Reconstruction:** Imaris, Analyze 3D, Amira-Avizo
- Deconvolution:** AutoQuant, Zen Desk
- 2D Image Analysis:** Axiovision, Zen Desk

3D PRINTING

- 3D Printer:** Formlabs Form 2

NMR

- NMR:** Agilent 600MHz

XRy CT scanning

- Xray CT:** NSI XS000